

INFORMATION BROCHURE SCHOOL VISIT

Dive into our underwater world

Plan your school trip

SUPERVISORS



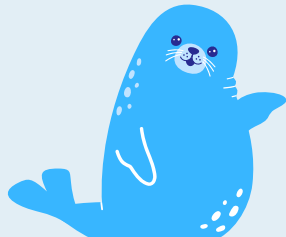
- Ordinary education: 1 free supervisor per 15 pupils.
- Special education: 1 free supervisor per 5 pupils.
- Wheelchair users: one free supervisor each.

You will receive one Profpass for every 15 students. That Profpass is immediately linked to one person (with name and address), so consider in advance who will be the owner.



Teachers may visit beforehand to prepare for the school outing. (On presentation of the teachers' card and outside school hours).

SEALIFE
Blankenberge



INTRODUCTION

We are very happy to welcome you to us. We are the first and only seal sanctuary in Belgium that has been in existence since 1998. Today, we focus mainly on the educational aspect, guaranteeing an educational experience for students.

RESERVATIONS

Reservations can be made via our website. You will receive an e-mail when your booking is confirmed. If there are any questions or comments, you can always contact us via mail.



PAYMENT

Payment can be made at the entrance both in cash and by card. You can also pay by invoice. In this case, it is important that you enter the correct details when making the reservation. Invoices are only issued on arrival, not before, and are sent by e-mail afterwards.

PRICES

The price is 7.5 euros per pupil. In addition, you can add the "Beyond the Surface" activity in our brand new classroom to your visit. Of that, the price is 1.5 euros extra per pupil (so it will be 9 euros in total). You will find more information on this later in the document.

ACCESSIBILITY



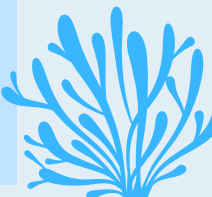
Easily accessible by car. There is a municipal car park in front of the entrance. Please note that this is paid parking.

Easily accessible by coastal tram. The stop is called "SEA LIFE / Floréal" and is a 2-minute walk to the entrance.



Easily accessible by train. The train station is a 10-minute walk away.

Finally, there is a separate bus parking area near the Bowling Inn, where your school bus can wait.



INFORMATION BROCHURE SCHOOL VISIT

Dive into our underwater world

During the trip

LUNCHEN IN HET PARK

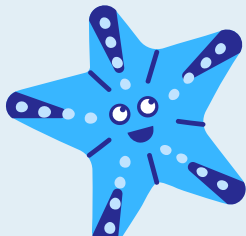
You can, of course, eat lunch with us.

Several places are provided for this purpose. Some places are covered, but they are all outdoors. There is also now the possibility of ordering a sandwich.

There is a drinks machine with chilled drinks and a coffee machine.

Do you leave everything tidy? There are plenty of dustbins throughout the park.

SEALIFE
Blankenberge



ARRIVAL

You can sign in at the entrance. Please try to respect your reserved time slot. All students will receive a stamp on their hand, which will allow them to enter the park all day

HOUSE RULES

The group must be accompanied by an attendant at all times.

May we ask you to stay calm around our animals, not knock on the windows and absolutely not touch the animals? Some animals can be touched at the Discovery Pool, under the supervision of a zookeeper.

Please also do not run through the indoor part of the park. Extensive play can be done outside, including in our climbing adventure.

FEEDING MOMENTS

We have a lot of regular feedings, where a word of explanation is given. These are very interesting and highly recommended to follow along. These are not shows, but training moments with an educational purpose.

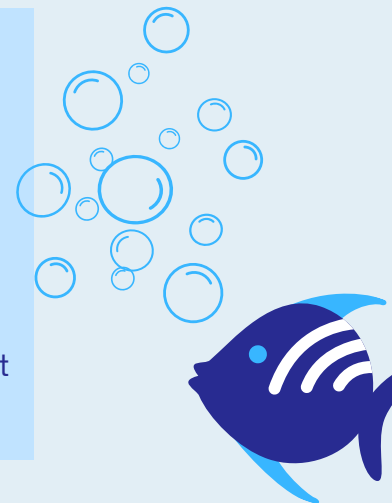
- The otters at 11:00 and 14:00
- The penguins at 11:30 and 14:30
- The seals at 12:00 and 15:00

SHOP

At the end of the visit there is the shop where a lot of nice souvenirs can be bought. You can pay there by card or in cash.

We ask that a supervisor stays with the children in the shop each time.

Bear in mind that it can be very busy here, so come early and try to spread it out a bit, as a maximum of 30 children are allowed in the shop at a time.



INFORMATION BROCHURE SCHOOL VISIT

Classroom

Dive into our underwater world



WHAT?

We have a brand new classroom, giving you an extra educational activity to couple with your visit to SEA LiFE. In a very interactive way, children learn about our North Sea, about the animals and pollution in that same sea, how we take care of our animals, about the seal sanctuary and some scientific fun facts.

RESERVATION

This activity can be added when booking a school visit via our website. Of course, you can also send us an e-mail. We will get in touch to make further arrangements.

PRICE

This experience costs 1.5 euros extra.

HOW?

We do this through puzzles, games, quizzes and tests.

It lasts 30-45 minutes and the content is adapted according to age.

If your group consists of more than 25 children, we will divide it into smaller groups. Indeed, the maximum capacity is 25 children so that everyone can explore everything in detail.

CONTACT

If there are any questions or comments, you can always contact us at
scholen@sealife.be
or on 050 42 43 00