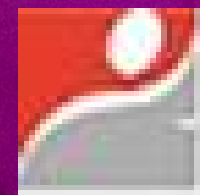


# SEA★LIFE

Paris

Your Sensory Guide



Fondation des Amis de L'atelier  
SESSAD de Val D'Europe

MERLIN'S  
Magic  
Wand!

# WELCOME

We'll talk about all the things  
you can:

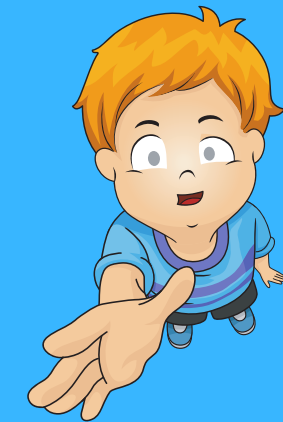
See



Hear



Touch or feel



Smell



WHEN YOU VISIT SEA LIFE PARIS



When I visit SEA LIFE Paris, outside I might see



a parking lot full of cars



a big signage



an escalator or lift



a colourful entry



# Inside SEA LIFE Paris, I can see



fish, turtles...



an ocean glass tunnel



lots of water and blue lights



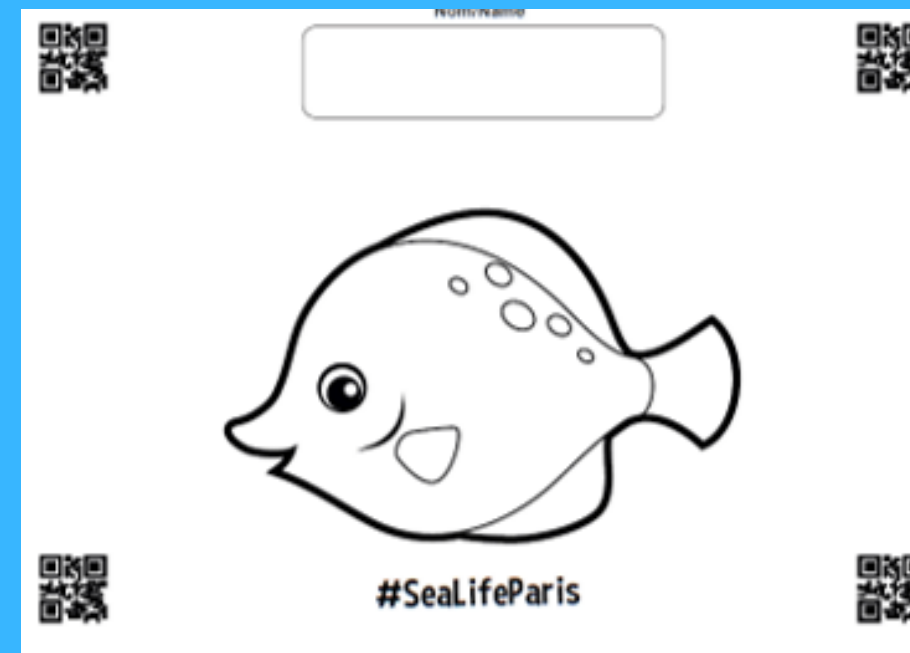
beautiful scenery



I can prepare for my experience at SEA LIFE, colouring in my favourite drawing at home, bringing it and seeing it come to life in our virtual aquarium



You can upload your drawings to [www.sealife-paris.fr](http://www.sealife-paris.fr) (section: discover the aquarium - virtual aquarium)



example



# At SEA LIFE Paris, I can hear



a speech by a member of the team



the sound of water



the voices of other children



some special effects  
(Amazonia area)



At SEA LIFE Paris, I can also hear

explanatory speeches on:

Our PENGUINS (11am & 3pm)

Our TURTLES (11.30am)

Our RAYS (2.30 pm)

Our SHARKS (4pm)



At the SEA LIFE Aquarium, I can be invited by an animator to touch  
at the interactive pool (rockpool):



cold water



a crab



shellfish



eggs (rays or sharks)





# At SEA LIFE Paris, I may smell certain odours



salt water



the humidity of the Amazonia



the smell of the seaside



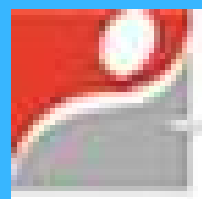
the smell of flowers



# SEA LIFE

Paris

in collaboration with



Fondation des Amis de L'atelier  
SESSAD de Val D'Europe



We look forward to welcoming  
you at SEA LIFE Paris Aquarium  
for a magical time!

